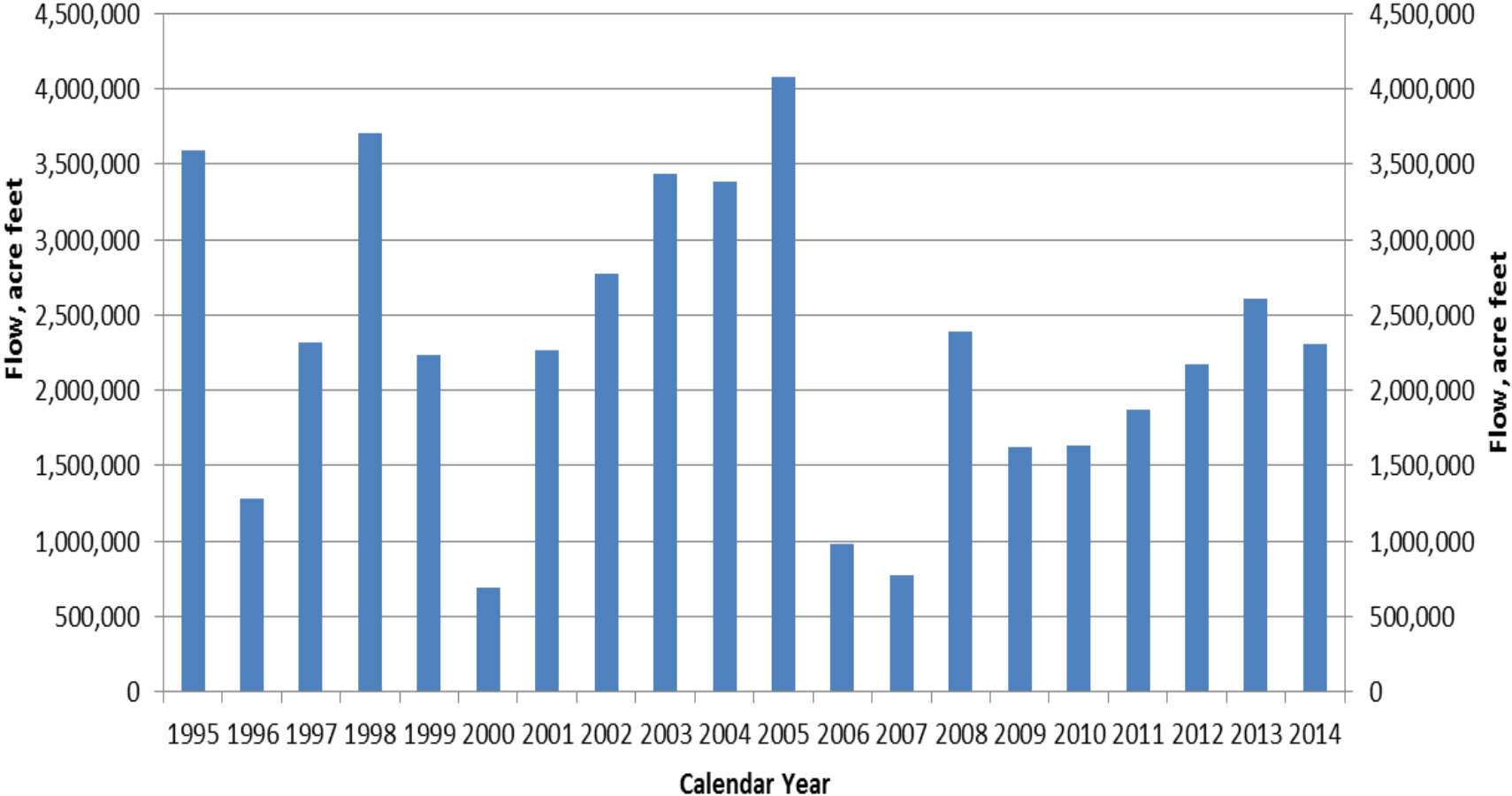


Annual Inflow to Lake Okeechobee

Average Inflow - 2,306,743 AF/yr

Data are subject to revision



Annual flow to Lake Okeechobee in acre feet per year

Calendar Year	Upper Kissimmee Pass Through	Lower Kissimmee	Taylor Creek / Nubbin Slough	Lake Istokpoga Pass Through	Indian Prairie	East Lake Okeechobee	South Lake Okeechobee	West Lake Okeechobee	Fisheating Creek / Nicodemus Slough	Total Flow, acre feet	Total Flow Billion Gallons
1995	1,407,968	463,063	309,268	432,894	329,657	27,390	128,787	94,833	402,800	3,596,660	1,172
1996	537,986	246,829	73,824	116,736	106,567	30,604	46,896	38,128	88,736	1,286,307	419
1997	868,133	408,091	122,317	255,323	157,500	138,834	62,236	55,536	252,360	2,320,330	756
1998	1,369,572	501,879	213,174	531,035	277,850	84,058	153,088	60,201	511,144	3,702,001	1,206
1999	488,644	419,125	281,948	255,172	236,940	88,554	154,382	65,591	246,040	2,236,395	729
2000	235,350	68,355	22,658	7,020	59,075	169,250	77,748	28,708	23,417	691,583	225
2001	295,455	388,044	124,292	213,652	178,039	230,982	390,639	121,578	321,447	2,264,128	738
2002	1,055,446	465,616	115,497	379,771	244,401	69,369	29,152	46,543	367,197	2,772,993	904
2003	1,502,585	645,873	181,787	400,083	252,658	27,093	22,324	34,623	373,353	3,440,378	1,121
2004	1,232,241	604,077	272,729	339,252	337,354	96,750	50,448	66,868	382,492	3,382,212	1,102
2005	1,667,156	659,505	343,734	523,898	359,426	15,237	27,688	72,280	408,393	4,077,317	1,329
2006	263,993	123,700	33,664	85,988	125,477	92,440	15,783	48,565	186,635	976,246	318
2007	105,342	68,863	21,429	18,505	46,240	357,366	694	123,086	32,653	774,179	252
2008	529,588	438,716	168,431	256,733	299,057	245,420	51,264	155,395	245,486	2,390,090	779
2009	686,747	180,485	47,726	111,400	200,404	78,553	3,443	136,264	173,940	1,618,962	528
2010	795,121	184,605	95,182	151,587	186,855	18,533	17,567	82,126	106,605	1,638,180	534
2011	675,930	442,155	58,732	163,358	129,190	86,520	1,535	224,454	94,080	1,875,953	611
2012	461,301	462,721	183,857	255,917	292,755	200,740	49,276	63,744	203,141	2,173,452	708
2013	604,055	534,096	189,220	315,720	450,718	36,313	29,324	47,907	401,442	2,608,795	850
2014	735,276	439,498	159,724	357,560	305,815	93,108	438	48,502	168,777	2,308,698	752
Average (CY1995-2014)	775,894	387,265	150,960	258,580	228,799	109,356	65,635	80,747	249,507	2,306,743	752

See map on following page for location of sub-watersheds

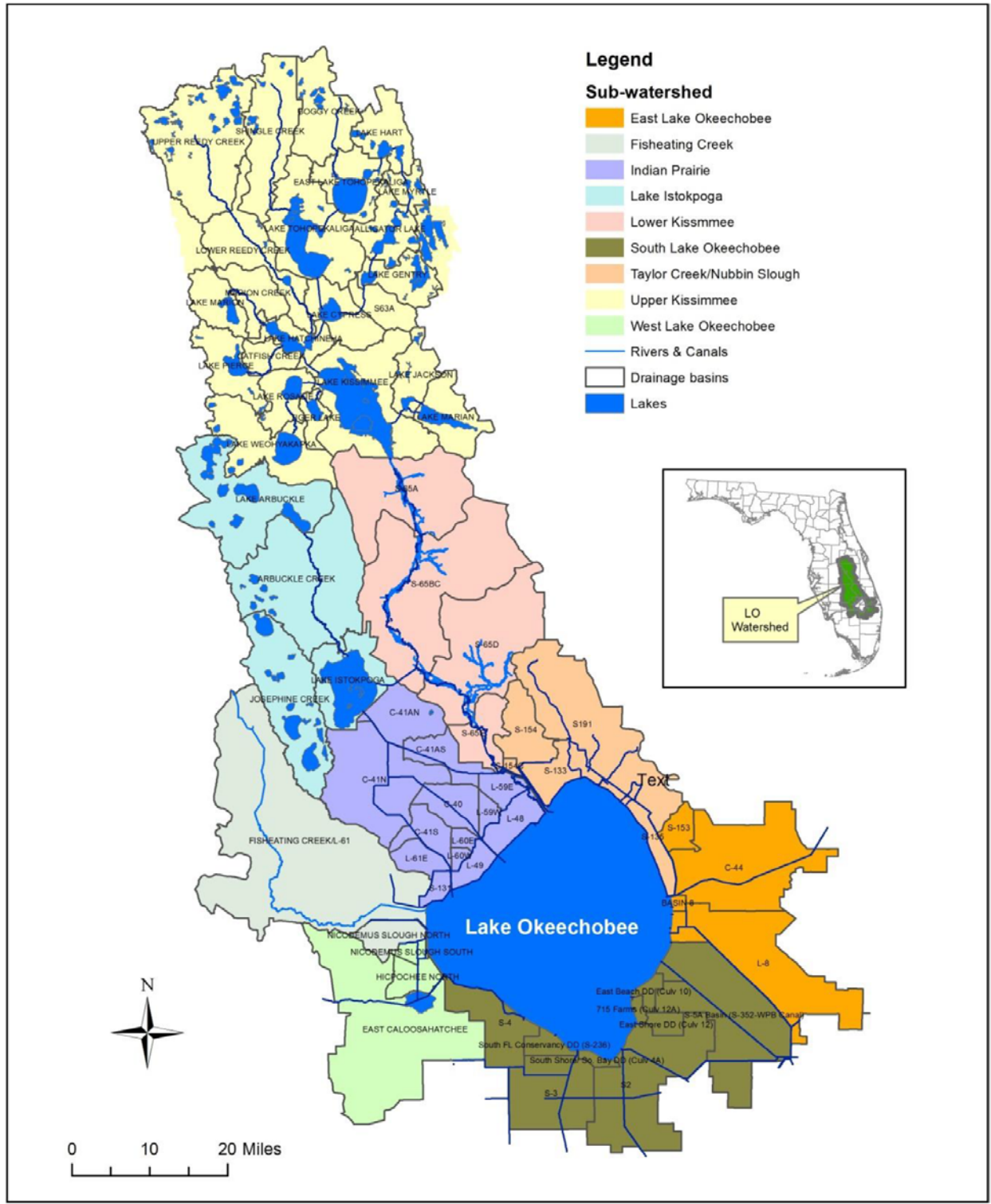


Figure 8-1. Lake Okeechobee Watershed (LOW) detailing sub-watersheds, drainage basins, and major hydrology.

From 2015 South Florida Environmental Report (SFWMD 2015)