

DRAFT – 2 3 2017 Update – G. Goforth

Lake Okeechobee Flows and Loads to the Caloosahatchee Estuary

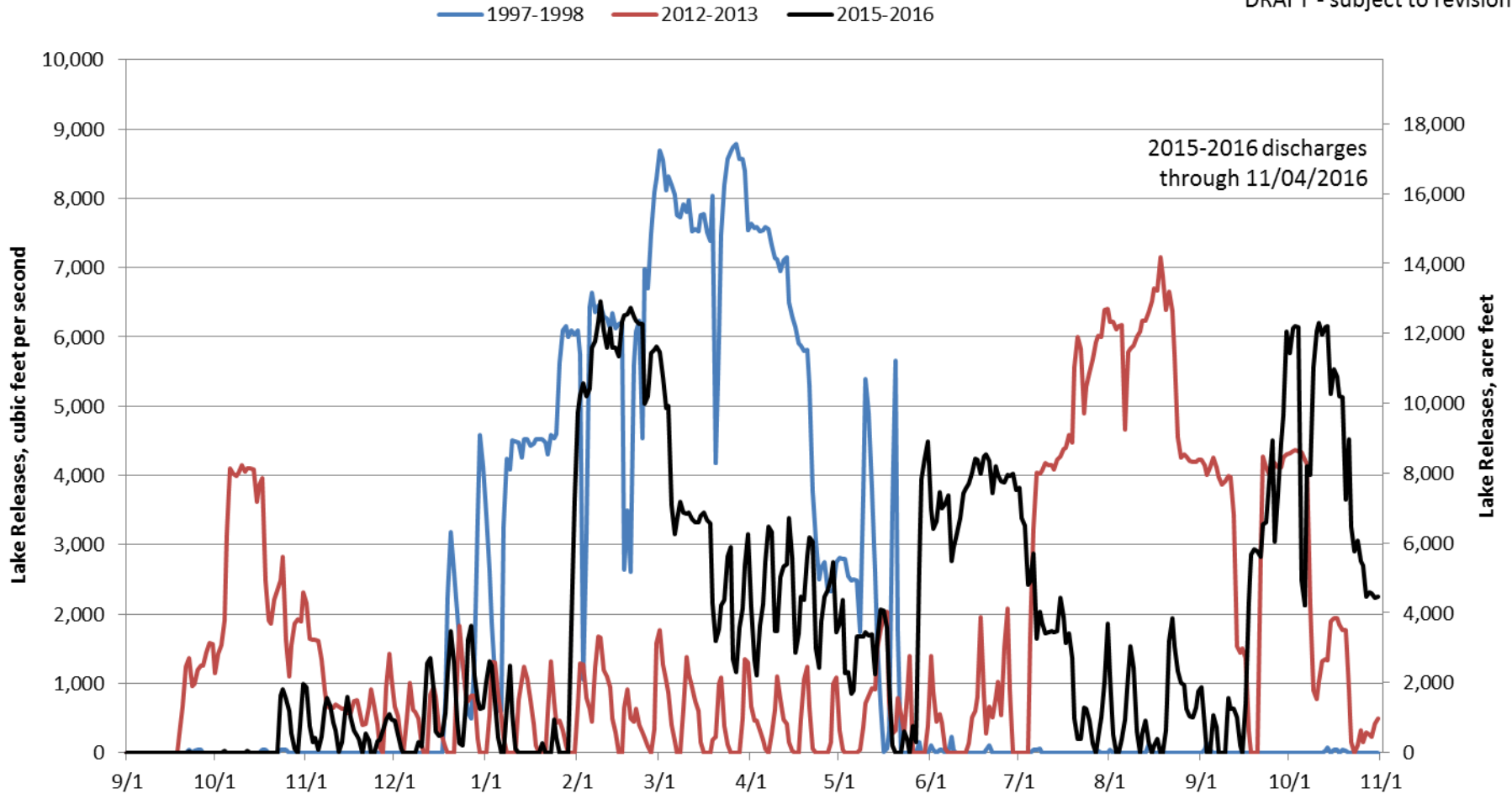
Time Period	Duration, days	Flow, acre feet	Average Daily Flow, AF	Average Daily Flow, cfs	Maximum Daily Flow, cfs	Total Phosphorus Load, pounds	Total Nitrogen Load, pounds	Total Suspended Solids, pounds	TP Conc, ppb	TN Conc, ppb	TSS Conc, ppb
Lake Releases											
1997-1998	155	1,557,078	10,046	5,065	8,788	288,633	6,568,760	8,316,313	68	1,551	1,964
2012-2013	398	1,366,561	3,434	1,731	7,151	294,420	5,136,800	21,610,934	79	1,382	5,815
2015-2016	379	1,588,693	4,192	2,113	6,520	406,328	6,293,738	30,223,906	94	1,457	6,996
C-43 Basin Runoff											
1997-1998	155	481,703	3,108	1,567	7,528	104,502	375,934	0	80	287	0
2012-2013	398	1,554,370	3,905	1,969	15,775	695,396	6,127,067	8,682,156	165	1,450	2,054
2015-2016	379	1,442,795	3,807	1,919	14,280	509,212	4,457,286	0	130	1,136	0
Note: a load of 0 indicates all the load through S-79 is attributable to Lake Okeechobee releases.											
Combined discharges (Lake releases + C-43 Basin runoff)											
1997-1998	155	2,038,781	13,153	6,632	12,700	393,135	6,944,694	8,316,313	71	1,253	1,500
2012-2013	398	2,920,931	7,339	3,700	21,338	989,816	11,263,868	30,293,089	125	1,418	3,814
2015-2016	379	3,031,488	7,999	4,033	14,280	915,540	10,751,024	30,223,906	111	1,304	3,666

Lake Okeechobee Flows and Loads to Both Estuaries

Time Period	Duration, days	Flow, acre feet	Average Flow, AF/day	Flow, Billion Gallons	Maximum Daily Flow, cfs	Total Phosphorus Load, pounds	Total Nitrogen Load, pounds	Total Suspended Solids, pounds	TP Conc, ppb	TN Conc, ppb	TSS Conc, ppb
Lake Releases to St. Lucie River and Estuary											
1997-1998	163	1,066,525	6,543	347.5	7,436	528,974	5,940,450	100,343,225	182	2,048	34,598
2012-2013	147	420,308	2,859	137.0	4,680	157,057	1,470,990	19,461,405	137	1,287	17,027
2016	280	674,145	2,408	219.7	3,950	296,071	2,754,178	54,063,349	162	1,502	29,490
Lake Releases to Caloosahatchee River											
1997-1998	155	1,557,078	10,046	507.4	8,788	288,633	6,568,760	8,316,313	68	1,551	1,964
2012-2013	398	1,366,561	3,434	445.3	7,151	294,420	5,136,800	21,610,934	79	1,382	5,815
2015-2016	379	1,588,693	4,192	517.7	6,520	406,328	6,293,738	30,223,906	94	1,457	6,996
Combined discharges											
1997-1998	163	2,623,603	16,096	854.9	15,816	817,607	12,509,210	108,659,537	115	1,753	15,230
2012-2013	398	1,786,870	4,490	582.3	11,621	451,478	6,607,790	41,072,339	93	1,360	8,453
2015-2016	379	2,262,837	5,971	737.3	10,110	702,398	9,047,916	84,287,255	114	1,470	13,697

Comparison of Lake Releases to the Caloosahatchee Estuary

DRAFT - subject to revision



Comparison of Combined Releases to the Caloosahatchee Estuary Through S-79 (Lake releases + basin runoff)

DRAFT - subject to revision

